



March 1, 2023

**Subject: Aftermarket Trim Tag for Mopar Vehicles**

Thank you for reaching out to us. We can assist you with an aftermarket Trim Tag. Your applicable vehicle information will be stamped onto a proper size and gauge (26) steel tag. We do not paint or place and inspector stamps onto the tag. We will do our best to create it as accurately as possible based on the information provided. *We will do our best to match up the font size to the tag provided if we are duplicating an existing tag. However, there may be minor variations to the factory original one in font size and depth.*

Aftermarket items are produced using our best knowledge, experience, and information available to create the most accurate items as possible. Without objective factory information vehicle information, we will not print a trim tag or Certicard without a custom ID applied.

We will provide you with the **Wise Premium Trim Tag Package™** electronically with every order. This package will provide a graphical layout of the layout, decoding and addition information related your vehicle. This package will be sent for your approval prior to us stamping the tag.

**Action to get the process started once payment has been received by MMC Detroit:**

• **Standard tag: With objective factory information:**

Please send us and a build sheet, window sticker and/or an image of the original trim tag please complete page #3 and send us the image to info@mmcdetroit.com.

• **Custom Tag: Without objective factory information:**

We will not print a trim tag or Certicard without a custom ID applied to it (see next page for example). if you do not have a build sheet, window sticker and/or an image of the original trim tag please complete page #4 and send us the image of the page to info@mmcdetroit.com

**Note:**

- **Factory ID imprint:** We do not add any bends, inspector marks or imprints on the trim tag. *There may be minor variations to the factory original one in font size and depth.*
- **Claim:** We do make any claim of the trim tags as being produced as factory original.
- **Vehicle information:** The information that we place on trim tag is based on the information provided.
- **Confidential:** This is considered a confidential document and is only intended to be transmitted to the person identified in the contact section above.
- **Inspection:** By stamping a tag and provider a Trim Package report does not imply that we physically inspected the vehicle. Professional physical inspection (Wise Validation Report) is available, at extra cost upon request.

*MMC Detroit Team*



**Trim Tag Requirements:**

**Standard Tag: With objective factory information:**

Please e mail us clear high resolution (300 dpi is preferred) images. If clear high-resolution images are not received, we cannot move forward. The tag will be stamped on 26 gauge steel just like the originals.

- VIN tag
- IBM card (1954-67)
- Broadcast sheet
- Advanced dealer shipping notice
- Monroney (Window sticker)
- Manufacturers Certificate (Door VIN) sticker
- Certicard (1963-68)

**Do not send us any original material in via mail. We do not want the responsibility for your original property.**

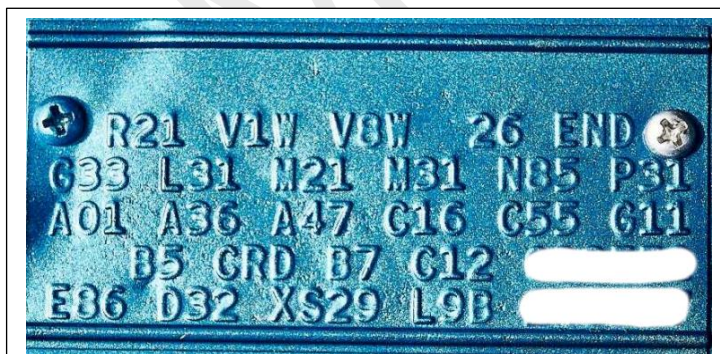
**Trim Tag Examples**



Steel tag (26 gauge) developed made in the USA by MMC Detroit



**Tag produced by someone other than us.**



OEM factory produced trim tag

### Custom Tag: Without objective factory information:

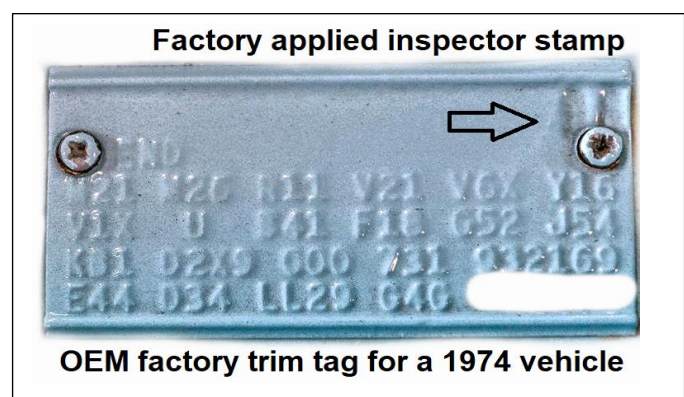
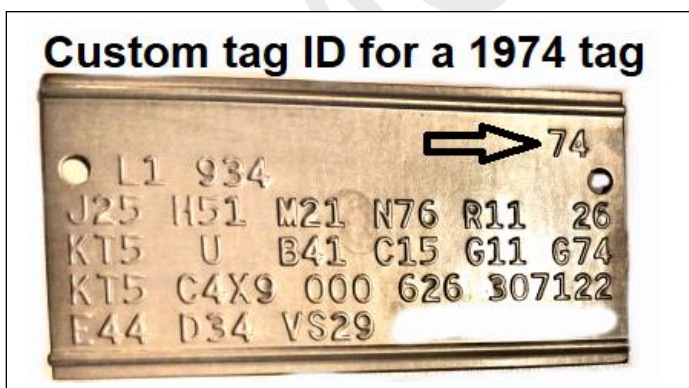
We will need a description of your vehicle and all the options that were installed by the factory on page #4 for the development of a custom tag. The VIN tag does not provide enough information to print a trim tag. The tag will be stamped on 26-gauge steel just like the originals. However, we will have to add two digits very discretely to the upper RH corner to ensure that it is not mistaken for a factory original produced tag.

**Note:** Without factory documentation we will only be able to produce a custom tag. *We require clear high resolution (300 dpi is preferred) photographs of the items requested below. If clear high-resolution images are not received, we cannot move forward.*

1. VIN tag
2. Primary body stamp number (radiator core support)
3. Secondary body stamp number. This number varies my year and model. Based on the model of vehicle it will be on found on the cowl, package tray, rear beam or under the deck lid seal (right or left side).
4. Vehicle images:
  - o Engine compartment- multiple shots
  - o Exterior (front , side , and rear)
  - o Interior: General overall

**Below is an example of a custom tag that was developed due to missing information.** On this 1974 vehicle we applied # **74** to the upper RH corner.

**Note:** Most factory OEM tags have an inspector stamp in the upper RH corner. This is stamped from the top down. When there is no build sheet, we place the impact stamp in the RH corner of the last two digits of the year of the car. Our stamp ins from the back forward.





## Trim Tag Request Work Sheet

Date		MMC Detroit job no	
Name		(MMC to provide once info and payment is received)	
Address		Vehicle order number	
City State , Zip		VIN	
E mail			

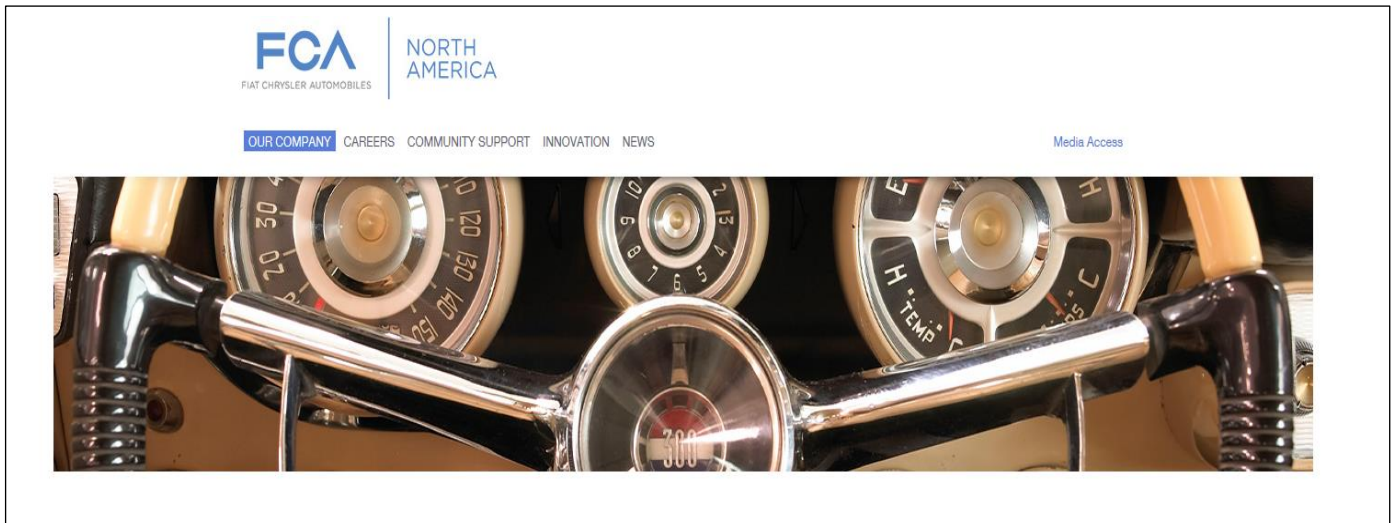
**Note:** Once completed please send an electronic image of this work sheet to: [info@mmcdetroit.com](mailto:info@mmcdetroit.com).

*We require clear high resolution (300 dpi is preferred) photographs.*

Description of Options	(Circle all applicable factory options)
<b>Image of VIN tag provided:</b> Yes No	
<b>Image of confidential VIN/ SO stamps provided:</b> Yes No :	
<b>Image of build sheet or IBM car provided:</b> Yes No :	
<b>Know vehicle packages:</b> Yes No If yes please comment	
<b>Exterior Paint : Color</b>	<b>Interior :</b>
Roof / Top color: painted vinyl	Upper door frame color:
Stripe: Style: delete, painted, tape pin	<b>Seats: Buckets Bench</b>
Transverse (Bubble bee), Longitudinal	Front: Buddy seat folding arm rest
	Material : Cloth, Vinyl/ leather Color:
Outside Mirror : RH , LH (drivers) or LH remote, std	Head rests
Chrome, Chrome sport, painted sport	
Fog lights: E body Cuda	Adjustable driver's seat manual
Front spoiler: E body	Center console
Elastomeric bumpers: Front , Rear Both	Overhead console
Sun roof	Dash: Standard instrument dash
Rear wing, Duck tail type spoiler	Dash: Rallye instrument dash A62 Tachometer
Luggage rack	Radio: AM, AM/FM, AM 8 Track, Cassette, radio delete
<b>Decore package</b>	Rear speaker
Rear window louvers	Rear window defogger
	Power windows
Glass: Tinted all windshield only	Air conditioning
	Windshield wipers: Variable 2 speed
<b>Moldings:</b>	
Wheel lip Belt line Drip trough	Cruise control
Sill: Thin wide,	Emission control system
Simulated quarter panel scoops	<b>Electronic ignition factory installed</b>
Vinyl side molding	California Emission system
Exhaust system : Chrome tips Turn downs	
Mufflers Resonators	
	Hood
<b>Radiator size: 22" / 26"</b>	Hold down pins
Trans: Automatic 904 or 727 Trans cooler : Y N	Shaker/ Air Grabber etc. N96
Trans: Manual (3 or 4 speed) shifter type:	Performance treatment V21
Axle: Chrysler 8.75" Ratio:	Standard flat / Sports
Axle: Dana 60 series Ratio:	
Sure grip ( Std on Dana 60 series)	
	Light package includes map and trunk light A01
Brakes	Trunk compartment light
Power brakes / Disc , Drum	Fender/ hood mounted turn signals
Wheels/ tires/ size 14" 15"	
Wheels Rallye, Magnum , Hub caps, wheel cover painted	Sales Type
Spare tire/wheel type: inflator , standard	Sold in the USA, Export , Canada, Other:



**Vehicle Information from FCA / Chrysler for vehicle built before 1968.**



Web site link: <http://www.chryslergroupllc.com/company/Heritage/Pages/Historical-Services.aspx>

FCA LLC does have some information available on vehicles built before 1968. Be sure to include the VIN of the car in question and proof of ownership (a copy of the title, for example), a self-addressed stamped envelope and a check made payable to FCA LLC.

Please contact Historical Services at that time for such information and materials as:

Owner and service manuals: 1915 - 1990

Photographs

Production numbers

Build records:

U.S.-built trucks from 1930 - 1950

U.S.-built cars from 1930 - 1967

**Note:**

1. The Historical Services does not have build records relating to Jeep®, AMC or Canadian-built vehicles.
2. Production Data (IBM) cards - Copies of IBM cards for vehicle from 1967 and older: There is a fee for three photocopies, and you can only get strictly limited information from the card, not even decoding of the data plate.

**Contact: Mailing address:**

**FCA LLC - Historical Services**

**12501 Chrysler Fwy.**

**CIMS 410-11-21**

**Detroit, MI 48288 USA**

**ATTN: Historical Information Fax:313-252-2928**

# VEHICLE CONCIERGE SERVICE



\$1,650,000 World Record Sale at Barrett-Jackson 2022 with Wise Validation Report.

## OUR MISSION

We continuously strive to enhance and advance the Mopar Automobile collector hobby. To provide products and services that meet or exceed your expectations at a fair price. To be a trusted resource for reliable information, products, and services. We strive to help our private clients with the knowledge we have acquired since 1952.

## WISE VALIDATION REPORT

We inspect hundreds of vehicles annually, which has helped us become a trusted source in the Mopar Community since 1952. We offer customized reports to ensure our objective is achieved.

Our reports contain A+ content. This gives our clients the confidence to achieve their objectives, reduces stress, and provides peace of mind. Our reports also help buyers/sellers establish a value that will assist in insurance valuation, reducing the risk of over-insuring or overpaying insurance premiums.

## OTHER PRODUCTS & SERVICES

- Professional marketing packages
- Vehicle sales assistance
- Market value assessments
- Restoration project management
- Restoration consulting
- Vehicle estate planning
- Trim tag development
- Trim tag validation
- VIN validation
- Powertrain VIN stamp validation

## VALUE TO SELLERS:

- Maximize value
- Maximize ROI
- Reduce risk and liability
- Increase collectability
- Professional marketing package
- Create provenance
- Sell with confidence

## VALUE TO BUYERS:

- Know exactly what you are buying
- Getting the best value
- Establish realistic market value
- Avoid false representation
- Make an informed decision
- Buy with confidence
- Minimize risk and loss of value



## Serving the Mopar Collector Hobby Since 1952.

Our family has specialized in all aspects of Chrysler, Imperial, Dodge and Plymouth cars since 1952 out of our base operation in Detroit, Michigan, the "Home of the Motor City".

We offer services ranging from appraisals, authenticating, quality inspector, validation, pre-purchase inspections, expert witness, restoration consulting and local and national show judging. MMC Detroit also has developed and published many world class restoration reference manuals that help serve and support the Mopar enthusiast. These manuals are highly detailed, and provide an unprecedented level of information unlike any other manuals in the collector car hobby.

We pride ourselves at keeping informed with all facets of the Mopar automobile hobby relating to muscle/collector cars in order to stay current with the pulse of the hobby and pass valuable information onto our customers. When only the best will do please reach out to us to assist with your Mopar needs.

### **Mission Statement :**

To continuously strive to enhance and advance the Mopar Automobile collector hobby.

### **Our Quality Policy :**

To provide products and services that meet or exceed your expectations at a fair price.

### **Our Goal :**

To be a trusted resource for reliable information, products, and services.

### **Our Objective :**

To share the information and knowledge acquired since 1952 and provide a customer experience second to none. We have established a web site ([www.mmcdetroit.com](http://www.mmcdetroit.com)) that has been developed to be the best source to obtain information relating to all aspects of Mopar automobile hobby from restoration services, parts dealers, car registries etc.

Please feel free to contact us for your needs at [info@mmcdetroit.com](mailto:info@mmcdetroit.com)



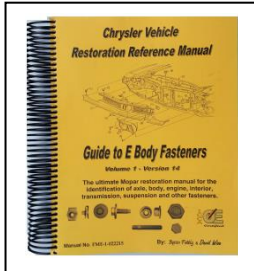
Original MMC brand logo 1952



## Reference Manuals for Chrysler, Dodge and Plymouth

MMC Detroit have been writing one of a kind world class documents and reference manuals for over 25 years. We are continuously upgrading our existing manuals and developing new manuals. No one in the Mopar collector car hobby writes and publishes more objective reference material and us. Visit us at [www.mmcdetroit.com](http://www.mmcdetroit.com) for the complete collection of reference material.

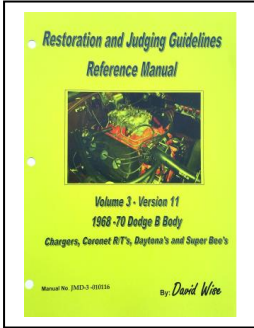
It is important to **“Fill your library before your fill your garage”**.



### Fastener Reference Manuals

Each manual contains individual section related to the engine, engine accessories, engine compartment, axle, transmission, front suspension, rear suspension, trunk, interior, gauges, seats, radio, exhaust, fuel, brakes, exterior, grille, taillights, frame, bumpers, doors etc. Over ~ 750 black and white pages and 5,000 images.

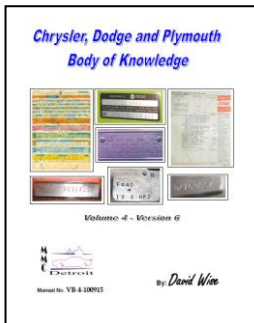
- **1970-74 E body FMEX-1**
- **1968-70 Dodge B body FMDX-2**
- **1968-70 Plymouth B body FMPX-3**
- **1972-82 Dodge and Plymouth Truck and SUV**



### Restoration and Judging Reference Manuals.

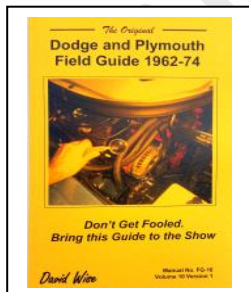
Each manual contains individual section related to the, engine, engine accessories, engine compartment, axle, transmission, front/rear suspension, interior (dash, gauges, console, seats, radio etc.) trunk, glass, stripes, mirror, exterior, fuel, brakes, exhaust, grille, tail lights, frame, bumpers, doors, tires and wheels. They also included paint identification markings, inspector stamps, paint, production information, date codes etc. Over ~2100 black and white pages and thousands of photographs.

- **1970-74 E body JME-1**
- **1968-70 Dodge B body JMD-2**
- **1968-70 Plymouth B body JMP-3**
- **1971-74 Dodge and Plymouth B Body**



### Chrysler, Plymouth and Dodge Body of Knowledge. VB-4

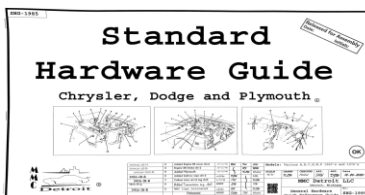
This is a full-size guide with black and white pages with thousands of photographs to help understand the important fine points including vehicle VIN's, trim tags, die lot stamp numbers, frame configuration, engines, axles, transmissions etc. and many other items. It briefly covers cars and trucks from the 1920's- 2015. However, the sweet spot of this information is from 1960-74. This manual gives you a brief overview of many important items to review throughout many years and is over 750 pages.



### The Original Field Guides

This is a handy pocket size guide is easy to travel with where every you go. It includes 1000 color photos to help understand the important fine points of a vehicle including VIN's, trim tags, die lot stamp numbers, frame configuration, engines, axles, suspension transmissions, interiors etc. and many other items.

- **Dodge and Plymouth 1962-74 Field Guide FG-16 (108 pages)**
- **E bodies 1970-74 FGE-16 (124 pages)**
- **B bodies Dodge and Plymouth 1968-70 FGB-16 (128 pages)**



### Standard Hardware Guide

This package is comprised on seven reference charts. It will provide a quick reference general overview of the most common items. The initial printing of this guide was in 1985 and it was re-released with significant updates in 2021. There is >2800 images. SHG-1985